

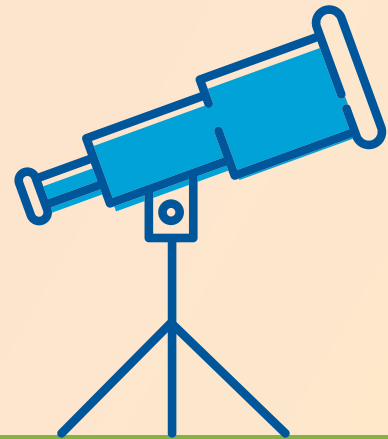
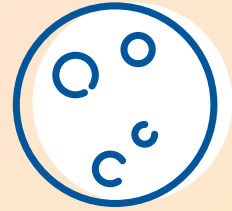
LEAD YOUR TEAM WITH WONDER



"Wonder is the beginning of wisdom." —SOCRATES

Some questions close rather than open doors to constructive thought and action. They teach people to react from problem to problem instead of create new possibilities for effectiveness and wellbeing.

Questions posed from an attitude of WONDER fuel creativity, innovation, adaptability, and growth, and they help people build positive bonds with each other. Bring the spirit of WONDER into how you lead teams by experimenting with one or more of these questions in your next team meeting!



READY TO THRIVE? Visit bewellleadwell.com/assessment or contact us at info@wisdom-works.com.

